

MR-Win6530

The Standard in
HPE NonStop Emulation

Available Online


In addition to shipping with the NonStop console, MR-Win6530 is now available to be purchased online at:
www.comforte.com/win6530

System Requirements

Windows 2003, 2008, 2012
XP, Vista and 7, 8 or 10

Key Features

- Kerberos-based Single Sign-On
- 6530, 3270 and VT220 Emulation
- Integrated Editor
- Local Printing
- Secure Sessions
- Secure File Transfer



MR-Win6530 is a terminal emulation package that provides Microsoft Windows users with secure, powerful and intuitive access to HPE NonStop, IBM and UNIX systems.

MR-Win6530 provides the most robust emulation capabilities on the market. That's why, after an extensive evaluation of the emulation offerings available, HPE NonStop chose MR-Win6530 to be the standard.

Today, HPE NonStop ships MR-Win6530 as part of the NonStop Console software package.

Full-Featured Terminal Emulation

MR-Win6530 combines outstanding performance and security with unique features specifically designed to support HP NonStop users. With MR-Win6530, users can create multiple NonStop 6530, IBM 3270 and VT220 sessions, and leverage an array of intuitive and robust management features. MR-Win6530 turns users' desktops into an integrated, convenient and secure workplace for both application and system level access to NonStop servers. Proven in over 300 customer deployments, MR-Win6530 offers...

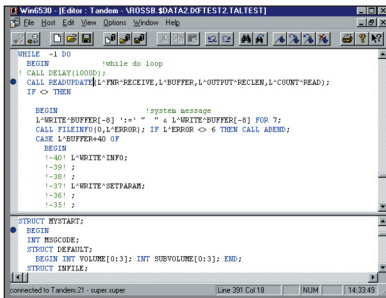
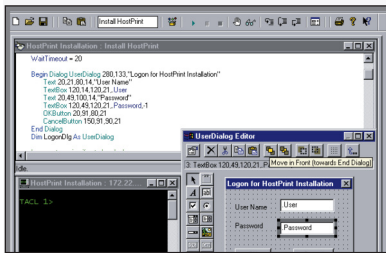
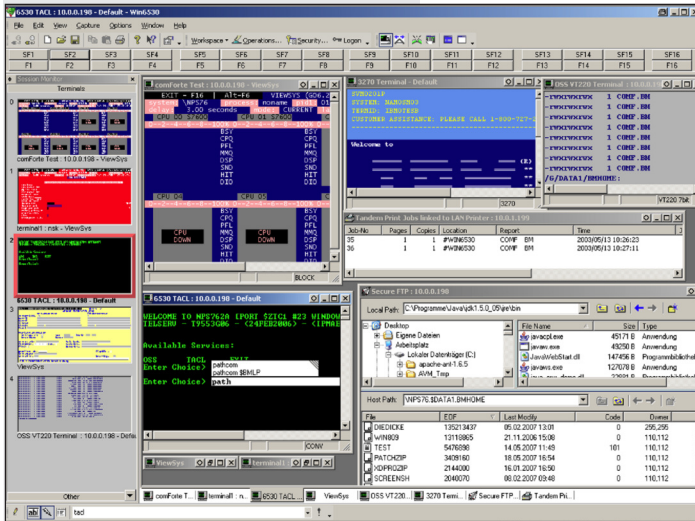
- **Seamless switching** – so users can toggle between Guardian and OSS environments within the same terminal session.
- **Robust security** – supporting secure SSH and SSL/TLS sessions (including TLS 1.2 standard), strong encryption keys of up to 512 bits, secure file transfers through FTP-TLS and SFTP/SSH, and Kerberos 5 user authentication via SSH.
- **Productivity tools** – offering Windows-style editing of commands, customizable toolbars, Visual Basic scripting, support for command line interfaces like TACL, and command history and inline command history for easy replication of common activities.
- **Centralized deployment and administration** – through its support for Citrix XenApp and Windows Terminal Server.
- **Flexible display and printing options** – providing a fully customizable user interface that enables convenient, intuitive views of all sessions, processes and commands; plus print spooling capabilities that enable users to preview and print NonStop server files just like those of a desktop application.
- **Context-sensitive functions and help** – enabling users to create context-based commands, toolbars, and help for NonStop-based applications.

Key Benefits

MR-Win6530 represents a world-class solution that enables organizations to...

- Secure data transmission and protect business information.
- Enhance productivity through intuitive, flexible and convenient terminal access.
- Implement Kerberos-based Single Sign-On with their HPE NonStop servers

MR-Win6530



comforte 21 GmbH, Germany
phone +49 (0) 611 93199-00
sales@comforte.com

Comforte Asia Pte. Ltd., Singapore
phone +65 6818 9725
asiasales@comforte.com

comforte, Inc., USA
phone +1-303 256 6257
ussales@comforte.com

comforte Pty Ltd, Australia
phone +61 2 8197 0272
aussales@comforte.com

www.comforte.com



For distribution partners in your region visit comforte's homepage
www.comforte.com

Features

General

- Customizable window layout
- Customizable Session Tabs
- Dockable session and control windows
- Customizable toolbar
- Office look and feel
- Online help

Session Management

- Session profiles
- Session monitor sidebar
- Multiple sessions in a single instance

Terminal Emulation

- NonStop 6530, IBM 3270, VT220
- Keyboard and attribute mapping
- Inline command editor with history
- Find functionality in terminal buffer
- Full screen display
- Seamless Switching Guardian – OSS

Security

- Secure terminal sessions (SSL/TLS, SSH)
- Secure File Transfers
- Single Sign-On via SSH (SSPI/Kerberos 5)
- Restricted user interface
- Password encrypted profiles

File Transfer

- GUI FTP and SFTP client
- IXF

Built-in Editor

- Local editing of host files
- Syntax-coloring for source code files

Printing

- Screen copies
- NonStop spooler front end
- Job print preview

Context-Sensitive Facilities

- User-defined function key labels
- User-defined pop-up menus
- On-line help for NonStop applications

Communication

- Serial port/TAPI communication
- TCP/ IP Telnet
- SSH
- Managed Telnet
- NetBios/MultiLan
- IPv6 support